

# ENTRY GUIDELINES



# 2025 EXCELLENCE IN CONSTRUCTION AWARDS

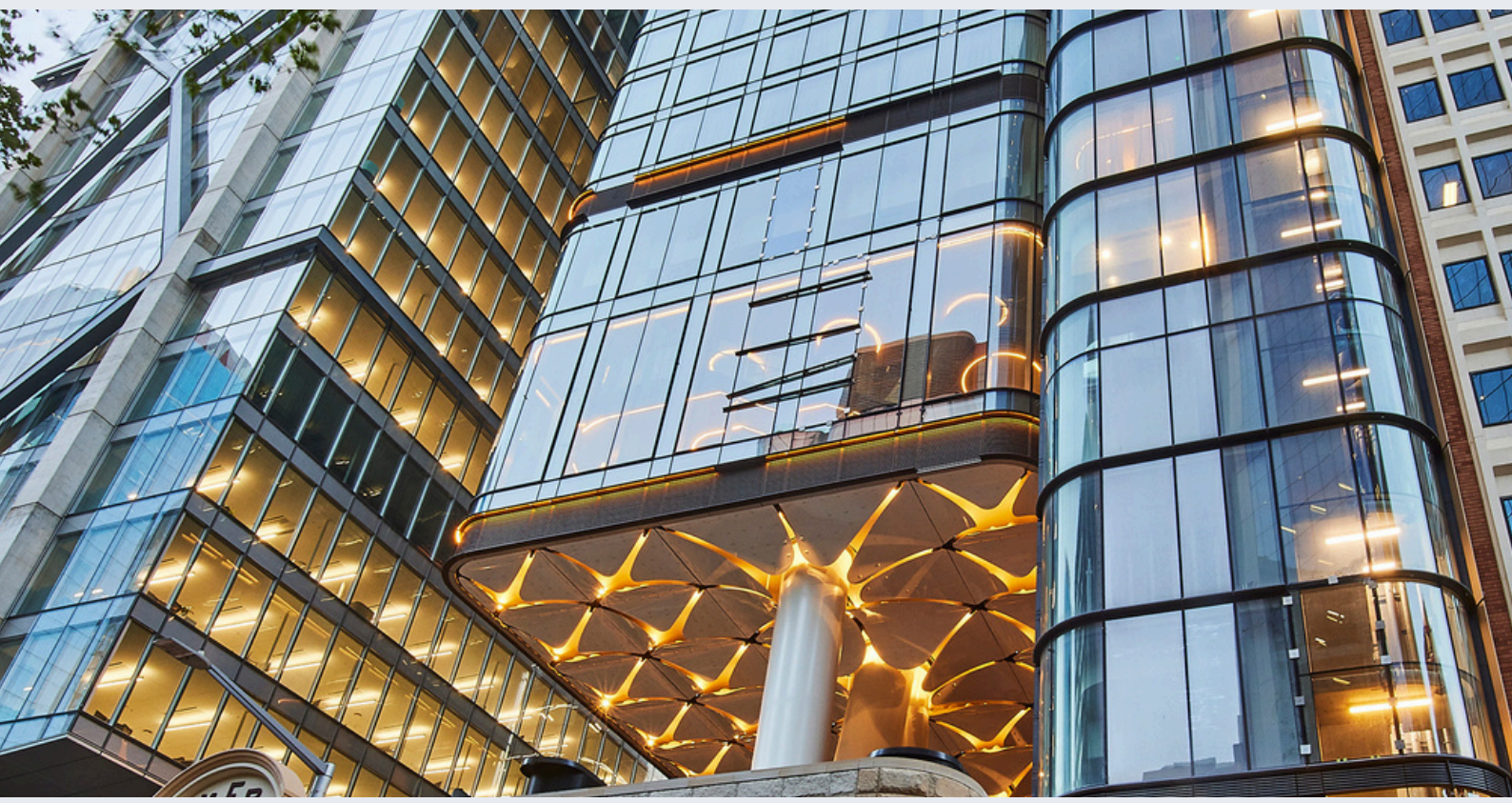


# Table of Contents

About the Awards	2
Entry Information	
Key Dates	2
Entry Fees	2
How to Enter	2
Entry Requirements	3
Entry Criteria	3
2025 Award Categories	4
Judging	
Judging Process	5
Judging Criteria	5
Frequently Asked Questions	6
Photography Assistance	7
Media Coverage	7

COVER PHOTOS L-R  
► BUILDER: BUILT DESIGNERS: FJCSTUDIO, E-LAB, SHARVAIN, PRISM ► BUILDER: BUILT ARCHITECT: WEBBER AUSTRALIA  
PHOTOGRAPHER: TIM KANE ► BUILDER: BUILD CORP ARCHITECTS: ARM ARCHITECTURE & CO.OP STUDIO PHOTOGRAPHER: ARTHUR  
VAY ► BUILDER: BUILD CORP ARCHITECTS: RIDLEY & BOWER JAMES BRINDLEY PHOTOGRAPHER: RALF TOOTEN ► BUILDER: ARENCO  
(NSW) PTY LIMITED DESIGN: AURECON AUSTRALASIA ► BUILDER: LIPMAN PTY LTD DESIGN/ARCHITECT: BVN ► BUILDER: CPB  
CONTRACTORS ARCHITECT: BILLIARD LEECE PARTNERSHIP PTY LTD ► BUILDER: ERILYAN PTY LTD ARCHITECT: AURECON





BUILDER: BILLBERGIA (NSW) PTY LTD ARCHITECT: FITZPATRICK+PARTNERS

# The Awards

The Master Builders Association of NSW Excellence in Construction Awards holds a prominent status within the industry as the premier annual event for the commercial, industrial, and civil engineering sectors.

These prestigious awards serve as a platform to celebrate remarkable accomplishments by companies and individuals within the building and construction industry in NSW. For nearly three decades, numerous outstanding commercial builders in NSW have been acknowledged and honored for their exceptional construction excellence, cementing their reputation as industry leaders.

## KEY DATES

### ENTRIES CLOSE

Monday 7 April

### JUDGING PERIOD

May to July 2025

## ENTRY FEES

### MEMBERS

\$1,210 (inc GST)

### NON-MEMBERS

\$2,200 (inc GST)

## HOW TO ENTER

All entries are to be submitted via the online AwardForce software by **5:00pm** on **Monday 7 April** [mbansw.awardsplatform.com](https://mbansw.awardsplatform.com)

### AWARDS PRESENTATION

Saturday 18 October 2025

**\*\*NEW VENUE\*\***

**International Convention Centre**

14 Darling Drive, Sydney

**CLICK HERE TO START  
YOUR ENTRY**

# Entry Information

## REQUIREMENTS

Entries are judged by a team of expert judges. To give the judges guidance prior to the onsite inspection, you are required to provide the following information.

### A. Online Entry

Complete and submit your online entry at [mbansw.awardsplatform.com](https://mbansw.awardsplatform.com) by **5:00pm** on **Monday 7 April 2025**.

### B. Documentation

- Project Description
- Brief Construction Methodology
- Construction/Design difficulties encountered
- NEW - Innovation and Sustainability
- NEW - Impact and Legacy
- NEW - Safety and Compliance
- Statement explaining why project is worthy of an award
- Average and peak on-site manpower
- Record of any notifiable incidents & Lost Time Injury
- Final Occupation Certificate from the Private Certifying Authority (PCA) or the Local Council
- Certificate of Compliance with the Building Code Australia (where appointed)
- Final Inspection Report from Fire Safety Engineering Consultant (where appointed)
- Site plans showing site establishment and materials handling methodology
- Simplified floor/elevation plans

### C. Digital Images

High resolution digital images **MUST** be submitted with entries. Images provided will be used in the audio-visual presentation and print media. Entrants are responsible for the quality of all images. Relevant categories must also supply before and/or progress photos.

- Minimum resolution of 300 dpi
- Format: JPEG or PNG
- Landscape Orientation preferred
- Include External and Internal Options

### D. Authorisation

The builder and the client must each signify their consent to the project being entered into the awards and willingness to be bound by the rules including accompanying publicity, by signing the authorisation form.

[Download Authorisation Form Here](#)



BUILDER: FDC CONSTRUCTION & FITOUT PTY LTD

## CRITERIA

- Entries must be submitted by Monday 7 April.
- Entry is open to both MBA NSW Members and Non-Members but only MBA NSW Members will be eligible for nomination for major awards (Outstanding Construction Award)
- Projects must have achieved practical completion within the period of 7 April 2023 to 7 April 2025.
- Project must have obtained Final OC from Private Certifying Authority or the Local Council, Fire Inspection Report (where appointed) and Certificate of Compliance with BCA.
- Projects entered previously may not be resubmitted.
- The Project or Site Manager responsible for the project must be available for the onsite visit/judging between May 2025 – July 2025.



# 2025 Categories

Some categories are broken down into price categories dependent upon the total construction cost of the project while other categories remain open without price limitations.

## **Adaptive Re-Use**

Up to \$20 Million  
\$20 Million & Over

## **Aged Care Buildings**

Up to \$25 Million  
\$25 Million - \$50 Million  
\$50 Million & Over

## **Best Use of Bricks**

## **Best Use of Concrete**

## **Best Use of Glass**

## **Best Use of Steel**

## **Best Use of Timber**

## **Car Parks**

Open Price Category

## **Civil Engineering**

Open Price Category

## **Commercial Buildings**

Up to \$50 Million  
\$50 Million - \$100 Million  
\$100 Million - \$150 Million  
\$150 Million & Over

## **Communications Buildings**

Open Price Category

## **Educational Buildings**

### **Childcare**

Open Price Category

### **Private Schools**

Up to \$5 Million  
\$5 Million - \$10 Million  
\$10 Million - \$20 Million  
\$20 Million - \$50 Million  
\$50 Million & Over

### **Public Schools**

Open Price Category

### **Student Accommodation**

Open Price Category

### **Tertiary Buildings**

Up to \$10 Million  
\$10 Million & Over

## **Health Buildings- New**

Up to \$10 Million  
\$10 Million - \$50 Million  
\$50 Million & Over

## **Health Buildings - Refurbishment**

Up to \$10 Million  
\$10 Million - \$50 Million  
\$50 Million & Over

## **Hospitality Buildings - New**

Up to \$10 Million  
\$10 Million - \$20 Million  
\$20 Million & Over

## **Hospitality Buildings - Refurbishment**

Up to \$5 Million  
\$5 Million - \$10 Million  
\$10 Million - \$20 Million  
\$20 Million & Over

## **Industrial Buildings**

Up to \$50 Million  
\$50 Million - \$100 Million  
\$100 Million & Over

## **Interior Fitouts**

Up to \$500,000  
\$500,001 - \$1 Million  
\$1 Million - \$1.5 Million  
\$1.5 Million - \$2 Million  
\$2 Million - \$2.5 Million  
\$2.5 Million - \$3.5 Million  
\$3.5 Million - \$4.5 Million  
\$4.5 Million - \$5 Million  
\$5 Million - \$7 Million  
\$7 Million - \$8 Million  
\$8 Million - \$10 Million  
\$10 Million - \$15 Million  
\$15 Million - \$30 Million  
\$30 Million - \$50 Million  
\$50 Million & Over

## **Lifestyle Living Over 55's**

Up to \$50 Million  
\$50 Million - \$100 Million  
\$100 Million & Over

## **Public Buildings**

Up to \$10 Million  
\$10 Million - \$50 Million  
\$50 Million - \$100 Million  
\$100 Million & Over

## **Refurbishment/Renovation /Extension**

Up to \$10 Million  
\$10 Million - \$20 Million  
\$20 Million - \$50 Million  
\$50 Million & Over

## **Restoration/Adaptive Re-Use of an Historic Building**

*(Entries in this division must be listed on the State Heritage Register)*

Up to \$10 Million  
\$10 Million - \$20 Million  
\$20 Million - \$50 Million  
\$50 Million - \$100 Million  
\$100 Million & Over

## **Retail Buildings- New**

Up to \$50 Million  
\$50 Million & Over

## **Retail Buildings - Refurbishment**

Open Price Category

## **Shop Fitouts**

Open Price Category

## **Sporting Facilities**

Up to \$20 Million  
\$20 Million - \$50 Million  
\$50 Million - \$100 Million  
\$100 Million & Over

## **Sustainability- Commercial**

Open Price Category

# Judging

The entrant must obtain permission from the client prior to judging which will take place between May and July 2025. Internal and external access to the project is required.

If any dates are unsuitable for onsite judging, these must be noted in the online form; once judging is allocated, times **cannot** be changed. Entrants will receive a minimum of two weeks' notice of their judging date.

The contact person onsite must be the Project or Site Manager responsible for the project.

The judges decision is final and no correspondence will be entered into.

The judges reserve the right to reclassify any entry and a winner may not necessarily be declared in all categories.



BUILDER: KANE CONSTRUCTIONS ARCHITECT: HASSELL  
PHOTOGRAPHER: BARTON TAYLOR ARCHITECTURE PHOTOGRAPHY



BUILDER: BUILT ARCHITECT: WEBBER AUSTRALIA PHOTOGRAPHER: TIM KANE

## JUDGING CRITERIA

All entrants must demonstrate excellence in the following areas:

**Quality of Construction**  
**Design Challenges**  
**Use of Materials**  
**Value for money**  
**Innovation**





# Frequently Asked Questions

## Who can enter the Excellence in Construction Awards?

The awards are open to both members and non-members of MBA NSW within the commercial sector of the building industry. To be eligible for entry, the project must have been completed within a two year period prior and have reached practical completion by the entry closing date.

Non-Member entries are not eligible to win major awards or to progress to the National Awards.

## Can I resubmit a project I entered last year?

No, previous entries cannot be resubmitted.

## What documentation do I need to submit an entry?

All the required documentation can be found on [Page 3](#) of this booklet under section B.

## Can I submit a project with an Interim OC?

If you have not yet obtained a Final OC, you will be required to submit an Interim OC with a detailed explanation as to why the Final OC has not been obtained and what parts of the building are not certified and why. Acceptance of the entry based upon this explanation will be at the judges discretion.

## How old can a project be?

To be eligible, a project must have been completed within two years prior to the entry closing date and also reached practical completion by that date.

## Can I submit a project that is still under construction?

No, all projects must be completed prior to the entry deadline. Projects under construction or projects that have not obtained a Final OC are not eligible.

## Can I enter a joint venture?

Yes, you can. Please ensure you add both company names when completing the entry form and ensure the authorisation form is signed by all parties.

## Do I need professional photos?

No, any photos that meet all of the photography requirements listed on [Page 3](#) under section C of this booklet can be submitted. Please note that good quality images will better profile your entry in print media and audio-visual presentations.

## Can I enter a confidential project?

Yes, when entering a confidential project, please add **CONFIDENTIAL** to the company name when submitting an entry. Please note client information will never be published.

## Can I request early or late judging?

Specific judging requests can be submitted, however these will be granted at the discretion of the Awards & Events Team. It is deemed the only legitimate reason for this request is due to availability of the client.

## Is this information for Regional Awards as well?

No, this information is for the State Awards, these awards are run independently from the Regional Awards. Regional projects are eligible to enter into the State Awards. Entrants wishing to be judged for the Regional Awards should enter through the relevant regional office. For more information on our Regional Awards, [click here](#)



BUILDER: PRIME CONSTRUCTIONS PTY LTD ARCHITECT: SBA ARCHITECTS

# Photography Packages

A professional photography service is available; please select this option and complete the order form as part of your entry submission. The MBA will coordinate with the photographer on your behalf who will then contact you to confirm your requirements and to schedule your photoshoot.

## PHOTOGRAPHY PRICING

### Commercial Property

- Up to 10 images \$682
- 10 plus images (full project) \$902

### ADD ON SERVICES

- Virtual Furniture - \$77 per image

*Projects located further than 30km from the Sydney CBD will incur an additional cost of \$75 per hour.*

*Photography includes high resolution, colour corrected, verticals corrected, basic retouching, exposure balanced professional images sent to you via an online link.*

*Images will be used for MBA purposes, but will be yours to use without restriction.*

*All pricing is inclusive of GST*

*An invoice covering all services rendered will be sent after your photoshoot has been completed.*



BUILDER: BILLBERGIA (NSW) PTY LTD ARCHITECT: FITZPATRICK+PARTNERS

# Media Coverage

The Excellence in Construction Awards are featured prominently in high quality publications following the awards evening. The Master Builder Magazine will publish a special feature on the Awards which is distributed to all MBA members across NSW, on the MBA website, and listed in media releases distributed to all media by the MBA.



@mbaawardsnsw



mbansw



events@mbansw.asn.au